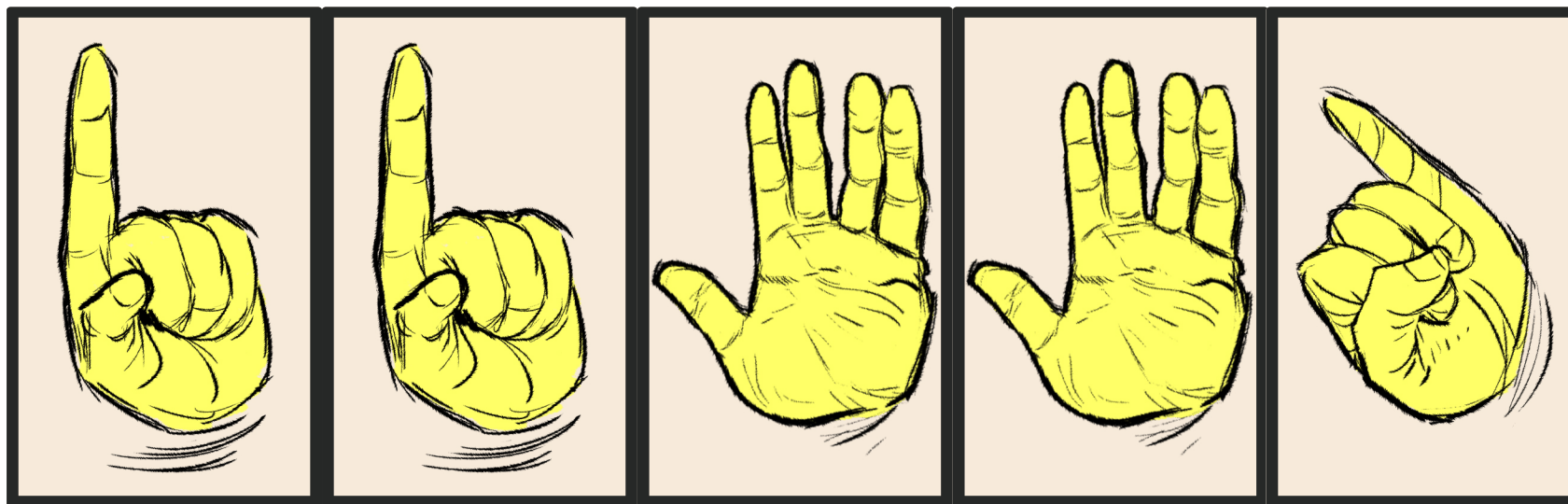


# LOOK MA' NO HANDS!

Print one sheet per player. Cut out the hands and keep them behind the shield.  
Place dice on the hands. Pointed fingers are Shots. Open hands are Spells. The  
extended pinky finger is Whip and does not require dice to play.  
When DRAW! is called raise your shield to reveal your selections.  
Remember to point those spell shot fingers at your target!



**Durdle Games**

"It's your turn!"